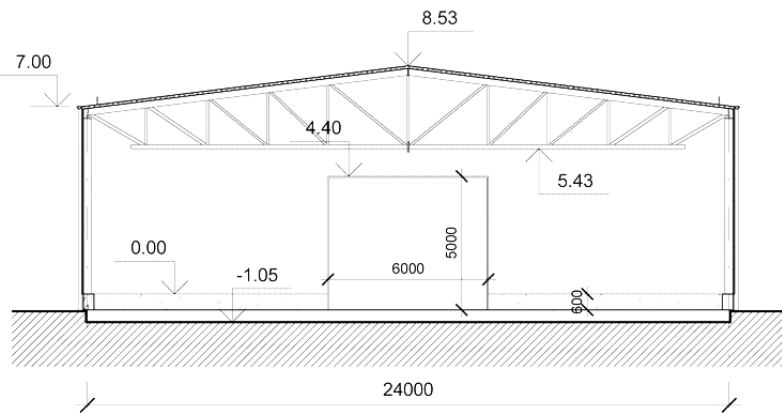


WDM24 TINPLATE CLAD BUILDINGS



- **RUUKKI** tinplate 0.6 mm
- possible coating: polyester, PVDF, pural
- snow loads 4.5 kN/m²
- wind loads 38 m/s
- wind and snow loads are compatible with the requirements of the location
- colours: wide range
- warranty: 5 to 15 years

